


SUMMATIVE ASSESSMENT- I 2025-2026
**Health and Physical Education, Art Education
 Work Integrated Education**

Class : V

Time : 2 hrs 15 minutes

Instructions

- The first 15 minutes is cool-off time. Read the questions and plan the answer during this time.
- There are three sections in the question paper. A. Health and Physical Education B. Art Education C. Work Integrated Education
- Follow the instructions while answering the questions and its sub questions in all the sections.

A. Health and Physical Education
Answer the given questions carefully.

(2x1 =2)

1. Which of the following is likely to cause health issues if consumed regularly?
(Fruits, Grains, Vegetables, Junk food)

2. Match the following.

Find the correct answer from the given table.

A.	Shavasana	i.	Strengthens the bones on the back.
B.	Tadasana	ii.	Helps in recovery.
C.	Bhujangasana	iii.	Helps in attaining physical coordination and balance.

	A	B	C
1	ii	iii	i
2	iii	ii	i
3	ii	i	iii

3. What is meant by sports?

(5x2 =10)

4. What is meant by body posture?

Questions 5-7 have internal choices 'a' and 'b'. Write any one among them.

5. a. What is meant by recovery?

or

- b. What is rest?

6. a. Explain 'Humming Bee' activity.

or

b. Explain the benefits of doing 'Tadasana'.

7. a. What are the important things you do to keep personal hygiene?

or

b. How much water should you drink daily? Complete the table.

Age	Measurement
4 to 8 years	
9 to 13 years	

7. What are good eating habits?

(1x3 =3)

B. Art Education

Answer any 4 from the questions 1 to 5.

(4x1 =4)

1. While colouring the sketches of flowers, the blue and the yellow colours got mixed. Which new colour will be formed then?

A. Red

B. Dark blue

C. Green

D. Orange

2. Write an example for an agricultural song from the given options.

A. Njattupattu

B. Vanchipattu

C. Navorupattu

D. Kuthiyottapattu

3. Find the odd one out.

A. Bharathanatyam

B. Kathakali

C. Street Drama

D. Kuchupudi

4. Identify the art form in the picture.



A. Kathakali

B. Ottamthullal

C. Chakyarkoothu

D. Mohiniyattam

5. The picture drawn as part of shooting a movie is called

- A. Script
B. Story Board
C. Photography
D. Clap Board

Answer any 'three' from the questions 6-10.

(3x2 =6)

6. Write any two folk songs which include some vaytharis that you are familiar with?
7. What is meant by folk dances?
8. What is a script?
9. What preparations do an actor need to do to transform as a character?
10. Edmund Thomas Clint was a wonder in the world of painting. Clint drew about 25000 pictures, though he lived only upto the age of 7. What were the peculiarities of his pictures?

Answer any 'one' from the questions 11-15.

(1x5 =5)

11. You are walking along the forest enjoying the beautiful sights. You can see the bathing elephants and herd of deers in a pretty pond far way. Draw and colour this scenery beautifully.
12. Match the following.
- | | | |
|---------------------|---|----------------------------------|
| 1. Nadanpattu | - | (a) G.Sankarapillai |
| 2. Kummatti | - | (b) Vandanakali |
| 3. Kolkali | - | (c) Kavalam Rambha |
| 4. Lumiere Brothers | - | (d) Mask made of dried palm leaf |
| | | (e) Film |
13. Write five film songs having the words related to rain.
14. Classify the components of films and dramas from the options and write it down.
- | | | |
|-----------|-----------|--------------------|
| • Stage | • Dubbing | • Cinematography |
| • Setting | • Editing | • Stage properties |
15. Identify the dance forms in the pictures.



A



B



C



D



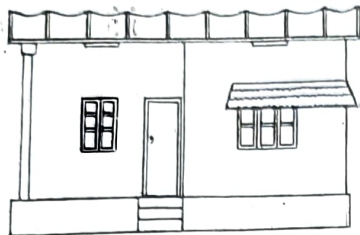
E

C. Work Integrated Education

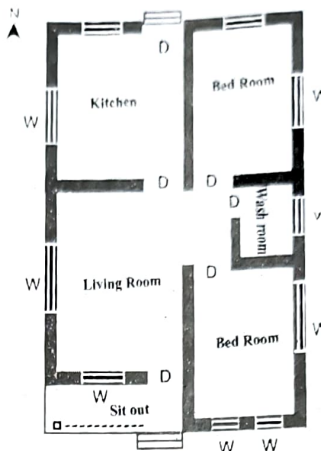
Answer all the given questions carefully.

(4x1 =4)

1. What do these picture indicate?



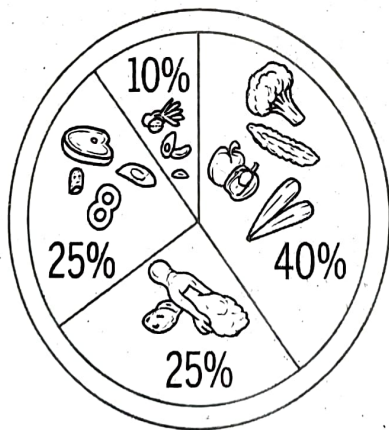
Picture 1



Picture 2

- a. Front view of house and arrangements of rooms.
 - b. Front view of house and ariel views
 - c. Arrangement of rooms and ariel views
- a, b, c

- 2. Tubers contain
- 3. Observe the picture of the food plate. What does 40% among it indicate?

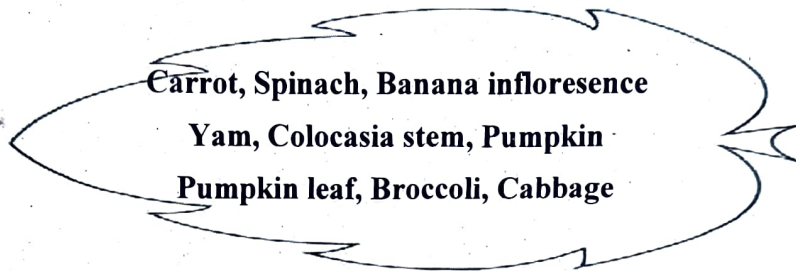


- 10% - grains
- 25% - protein
- 25% - fat
- 40% - ?

4. Mixing of soil, dry cow dung powder and coconut peat in equal proportion is
5. Observe the table and write the correct answer. (4x2 =8)

a) Carbohydrates	-	(1)	Vegetables
b) Protein	-	(2)	Milk products
c) Fat	-	(3)	Grains
d) Fibres	-	(4)	Fish and meat

- A. a-3, b-1, c-4,d-2
- B. a-3, b-4, c-2,d-1
- C. a-1, b-3, c-4,d-2
- D. a-2, b-3, c-1,d-4
6. Write the leafy vegetables from the options.



Questions 7 and 8 have internal choices (a,b). Answer any 'one' among them.

7. a. Write the names of four diseases that cause due to the excess amount of unsaturated fat in the body.
- or*
- b. What are the materials needed to build an Erumadam (Tree hut)?
8. a. What are the factors that cause the difference in the shape and construction of houses?
- Physiography
 -
- or*
- b. What are the things used to make eco friendly grow bags?
9. Prepare a questionnaire to conduct an interview with the person who was bagged with the Best Farmer Award from the Government of Kerala (include at least 6 questions)
- (1x3 =3)