

SAMAGRA SHIKSHA KERALA
FIRST TERM EVALUATION 2024-2025
ENVIRONMENTAL SCIENCE

E 304

Standard: 3

Time: 2 hours

Name of the student

Name of the school

Division

Signature of the parent

Signature of the teacher

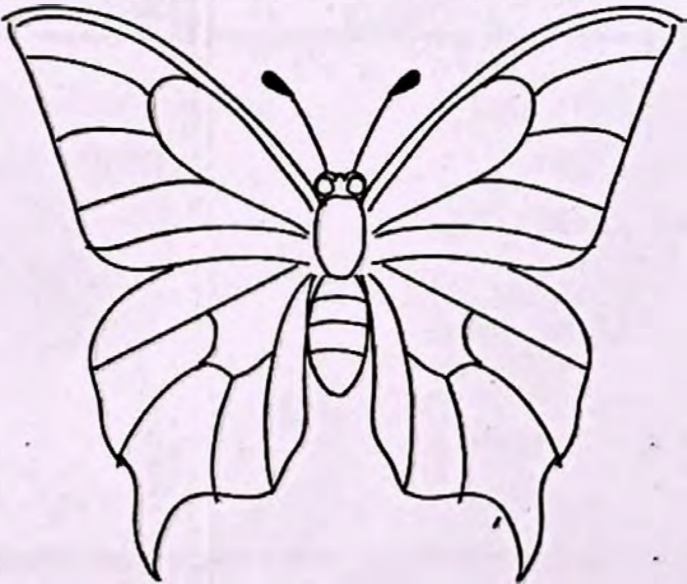
S No	Activities	Grade
1	Butterflies	
2	Moves Moves	
3	Protection of Plant	
4	Let's Plant and Grow	
5	Festival of Forest	
6	Let's Measure Rain	
	Overall Grade	

Instructions

1. The first 15 minutes will be cool-off time.
2. Write answers for any five activities from Activity 1 to 6.
4. Answer all the sub-questions of the selected activities.

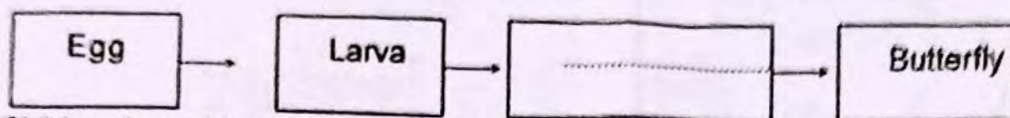
Activity 1 - Butterflies

- A) Butterflies are different in their colours and designs. Here is an outline of a butterfly. Colour it.



- B) The butterflies in our locality have different names. Write the name of a butterfly you have seen.

- C) Haven't you observed the life cycle of a butterfly? Fill up the blanks.



- D) Children brought some plants to expand the Butterfly Park in the school. Help Mithra prepare the 'Haritha Card', gathering information of ilamulachi and curry leaf plants.

Ilamulachi (Miracle Leaf Plant)

1. Category:.....
(Herb/Tree/Shrub)

2. Part used for planting:.....
.....

3. Features of the leaves:
.....
.....

4. Features of the stem:
.....
.....

Curry Leaf Plant

1. Category:.....
(Herb/Tree/Shrub)

2. Part used for planting:.....
.....

3. Features of the leaves:
.....
.....

4. Features of the stem:
.....
.....

Activity 2 - Moves Moves

A) Draw lines and connect the creatures with their ways of movement.

Snake

Walk

Fish

Fly



Man

Crawl

Crow

Swim

B) Observe the pictures below. Write the body feature of the duck and the child based on their movement.

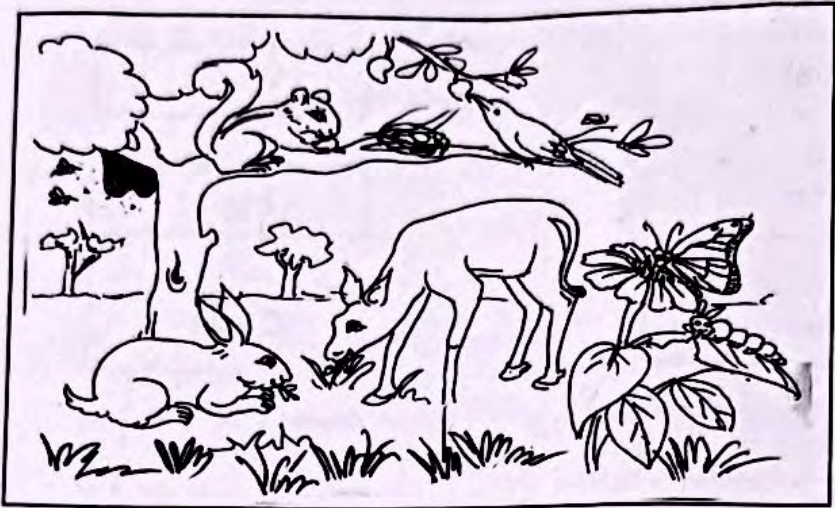
	<hr/>
	<hr/>

C) Observe the creatures given below. Identify and circle the odd one based on their movement.



Activity 3 - Protection of Plant

Observe the picture.



A) What are the benefits of plants for other living beings?

B) Reena and her friends are expanding the Bio Diversity Park. For this, they prepared a list of plants in the park.

Rose, Mukkutti, Hibiscus, Mango tree, Plantain, Thumba, Jackfruit tree, Thulasi, Banyan Tree

Help them categorise these plants. Write also the criteria in the relevant columns.

Herbs
.....	Hibiscus	Banyan Tree
.....
.....

Activity 4 - Let's Plant and Grow

A)

Plants	Germinating from seeds	Sprouting from the stem	Uprouting from the leaves	Sprouting from the roots
Rose		✓		
Mango Tree	✓			
Nishagandhi		✓		
Pea	✓			
Nilappana		✓	✓	
Kadaplavu				✓
Hibiscus		✓		

New plants are produced from various parts of plants. Analyse the table and write your findings.

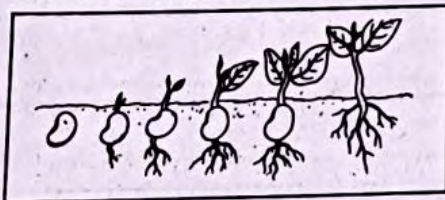
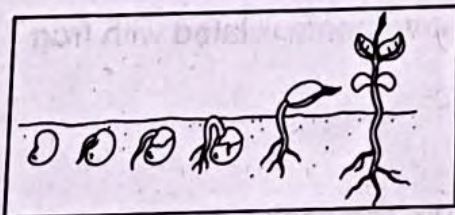
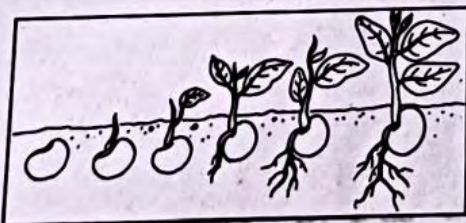
•

•

•

•

B) Which of the following shows the stages of the growth of a pea plant? Put a (✓) tick mark against the right one.


☐

☐

☐

Activity 5 - Festival of Forest

A) Food fest is going on in the forest. Mittu monkey prepared a list of food items eaten by different creatures. Look at the table.

Creatures	Food Items
Bear	Fruits, Small creatures
Elephant	Grass, Fruits
Eagle	Meat, Fish
Crow	Meat, Fruits
Tiger	Meat
Deer	Grass

Food items for the creatures were arranged in three counters . From which counters should the creatures get their food? Complete the table.

Herbivores	Carnivorous	Omnivorous
.....

B) Mittu and the team served the food items in the counters based on the body features of the creatures. What are the body features which help the following creatures in gathering food?

Tiger:
Eagle:

) Put (x) mark against the wrong statements related with frog.

- Lives in water and land
- Eat small creatures
- Cannot catch prey stroking out the sticky tongue.
- Can swim and jump

☐

☐

☐

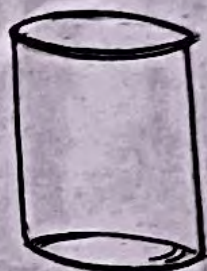
☐

Activity 6 - Let's Measure Rain



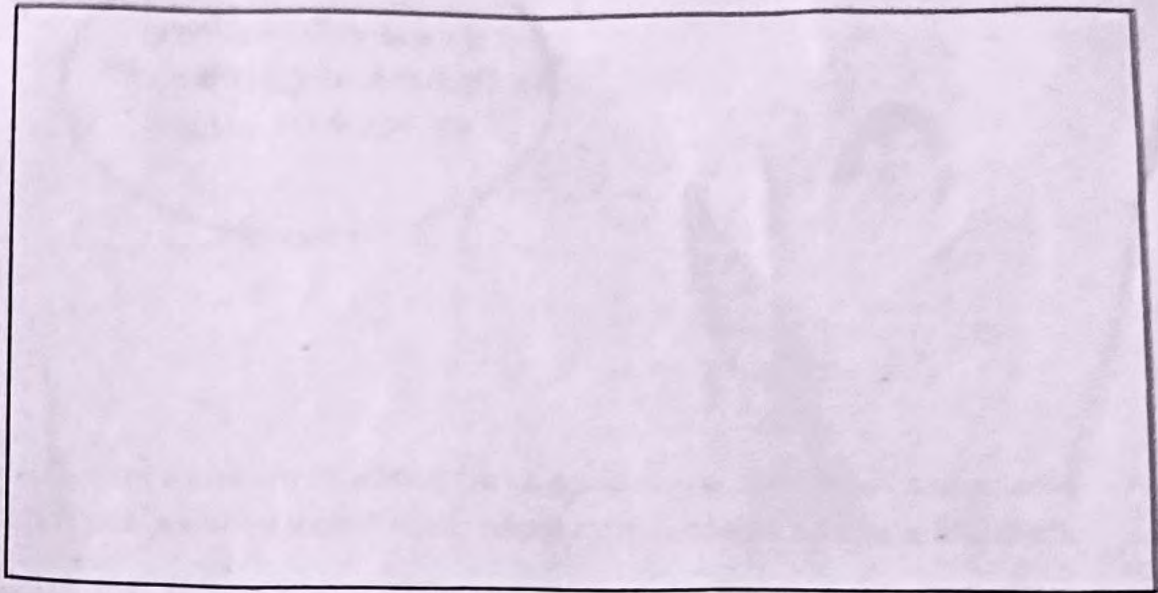
Is the amount of rainfall in the surroundings of school and house the same?

- A) Neena and her friends are making a rain guage to measure rainfall. Which materials are to be selected from those given below to make a rain guage?



Which among these materials are needed to make a rain guage?
Write them below.

B) Draw the picture of a rain guage.



C) Where can we fix the rain guage to measure rainfall? Put (✓) mark against the right answer.

- Under the tree
- In an open place
- On a place where water falls from the roof.

<input type="checkbox"/>
<input type="checkbox"/>
<input type="checkbox"/>