

# SUMMATIVE ASSESSMENT - TERM I 2025 – 2026

## BASIC SCIENCE

Class : 6

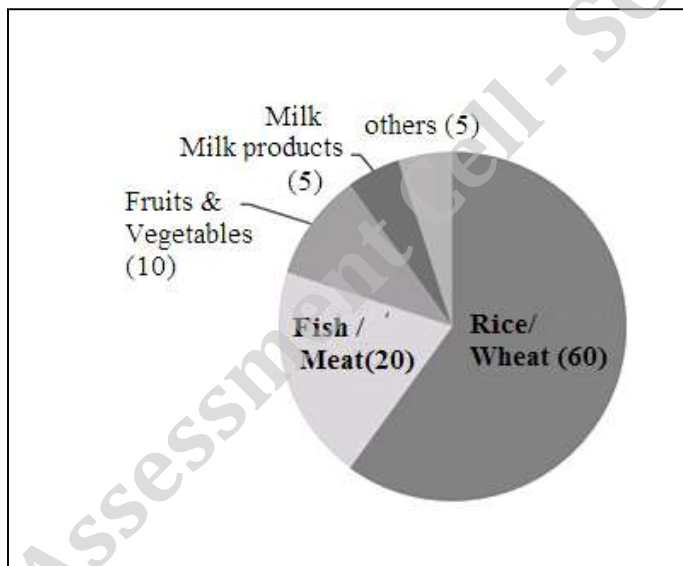
Time : 2 Hours 15 minutes

### Instructions

- **15 minutes cool off time** is allotted for reading and understanding the questions.
- Answer all the 6 questions. Answer all the sub question in it.
- For questions with **internal choice**, answer **either A or B**.

(1A)

Observe the Food Chart



The Food Chart shows the proportion of different food items included in a family's weekly diet in our locality.

- a) Which food item is included the most in the diet?
- b) Are the proportions of the food items appropriate? Why?
- c) What are the main changes that should be made to the family's food habits?

OR

**(1 B)**

Look at the food habits of three children and the difficulties they have.

- Anu- (constipation, stomach ache) –Eats rice, fish, meat, egg, milk etc.
- Binu- (obesity, stomach ache)-Eats fried items a lot, meat, egg, milk etc.
- Deepa- (constipation, infection) less intake of water, doesn't eat fruits and vegetables.

- a) Which food item was missing from all the three children's diets?
- b) What advice should be given to Binu to improve his food habits?  
Explain the reason for this advice.
- c) Explain what changes should be made in Deepa's food habits?

**(2)**

Observe the table given below and find out whether the information is correct.

<b>Vitamin</b>	<b>Deficiency Disease</b>	<b>Foods to eat</b>
Vitamin A	Mouth Ulcer	Gooseberry, lemon
Vitamin B	Scurvy	fish, carrot
Vitamin C	Night Blindness	Brown Rice, Spinach

- a) Reconstruct the chart of deficiency diseases caused by the lack of Vitamins A, B and C and the foods that should be eaten to overcome them.
- b) Write one symptom of the deficiency disease 'Scurvy'
- c) Choose the correct statement from the options given below.
  - A. Night blindness is a condition in which a person cannot see at night
  - B. A person with night blindness can see in bright light.
  - C. Night blindness is a condition in which a person cannot see during the daytime
  - D. A person with night blindness cannot see in bright light

**(3A)**

- a) What will happen if iron filings are sprinkled on a bar magnet? With the help of a picture illustrate how the iron filings stick to the bar magnet (Mark the poles of the bar magnet you have drawn).

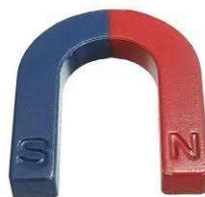
Given below are the pictures of two objects A and B.



- The object A attracts a bar magnet
  - The object B is repelled by with a magnet
- b) Find out the false statement from the following.
- A. 'A' can be a magnet
  - B. 'B' can be a magnet
  - C. 'A' can be an iron bar
  - D. 'B' can be an iron bar
- c) Identify the magnets given in the picture and write their names.



**Picture 1**



**Picture 2**





**OR**

**(3B)**

Observe the picture.



- Write a situation where the magnet is used in this device.
- Write another situation in daily life where magnet is used.
- Observe the given table. Choose the correct picture and name of the magnet from the options below.

1. Magnetic bar	i. 
2. Magnetic needle	ii. 
3. Magnetic ring	iii. 
4. Magnetic disc	iv. 

- 1 - i
- 2 - ii
- 3 - iii
- 4 - iv

- Design a device / system that helps solve a problem by using the properties of a magnet or an electromagnet. Draw a picture of it and explain the use.

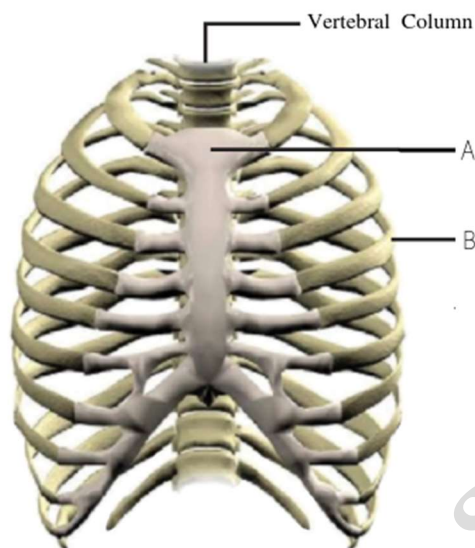
(Hint: To separate metal objects from garbage/water bodies)

(4)

- What are the materials required to make an electromagnet?
- The electromagnet made by Anu can lift only a needle. Write one suggestion to improve the power of the magnet.
- The electromagnet made by Vinu's group is not working. What could be the reasons for this? (Write two reasons).

(5)

Look at the picture.



- a) Observe the picture and write down the names of bones marked as A and B. What are the major functions of these bones?
- b) Write two functions of the human skeleton.
- c) Examine the given statement and the reason for it.

**Statement:** The skeleton of birds is light in weight.

**Reason:** The skeleton of the birds is incomplete.

By examining the statement and the reason, find out which of the following is correct.

- A.** Statement and reason are correct
- B.** Statement and reason are incorrect
- C.** Statement is correct and reason is incorrect
- D.** Statement is incorrect and reason is correct

(6)

Children are making some models with clay. They may use various joints in their body to perform this activity.

a) Complete the table given below.

Activity	Joint/ joints in the body used
Mixing the clay with feet	
Bringing the clay to the table	
Making different models	

b) Observe the information given in the table.

Joints	Body part that includes a joint	Characteristics
1. Pivot Joint	a. Shoulder	i. Can be moved in only one direction
2. Ball and Socket Joint	b. Knee	ii. Maximum freedom of movement
3. Hinge Joint	c. Neck	iii. A bone that moves forward, backward and side to side in another bone

Which of the following is correct based on the information given in the table?

- A. 1 – c – iii, 2 – a – ii, 3 – b – i
- B. 1 – a – i, 2 – b – ii, 3 – c – iii
- C. 1 – a – ii, 2 – b – iii, 3 – c – i
- D. 3 – c – ii, 2 – a – iii, 1 – b – i

c) How can you construct a model that would help to explain the function of the hinge joint? Draw a picture of your design.