

SUMMATIVE ASSESSMENT - I 2025-2026

MODEL QUESTION PAPER SOCIAL SCIENCE

Class : 5

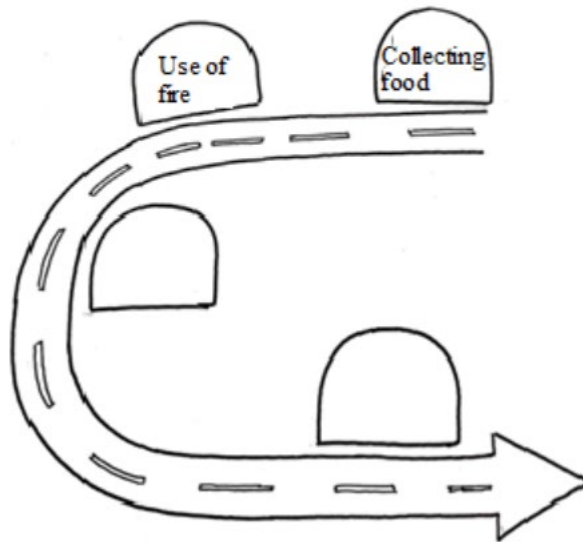
Time : 2 Hrs 15 Minutes

INSTRUCTIONS

1. 15 minutes cool off time is allotted for reading and understanding the questions.
2. Answer all the 6 questions. Answer all the sub questions in it.
3. For questions with internal choice, answer either **A** or **B**.

(1)

- a)** The milestones given below represent the stages of development in the food habits of early humans. Find out the missing ones.



- b)** Make a note on the impact of the use of fire on human life.

(2.A)

Every human being has the right to have healthy food



- a) Which day is observed as World Health Day ?
- A. October - 6
 - B. September - 16
 - C. June - 6
 - D. October - 16
- b) Write the main ideas to be included in a speech on the topic “The importance of Observing Food Day”.

OR

(2.B)

- a) You have met Meenu from the unit “Peeli’s Village, haven’t you? Just like Peeli’s friends, there are people around us who come from different social backgrounds. Do you think it is necessary to include them in our happy moments also? Prepare a short note expressing your opinions.

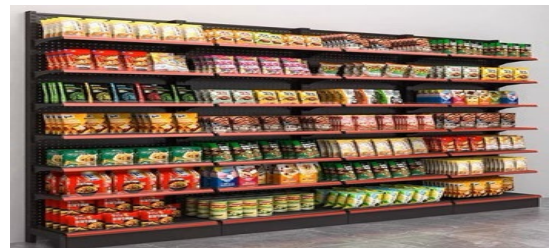


- b) You have understood the changes in the attitude of Peeli’s friends after their visit to village. Which statement given below is not suitable to their changed attitude?
- A. It is possible to lead a happy life both in village and city alike.
 - B. Everyone should be treated equally, regardless of language or region.
 - C. Life with advanced facilities alone is happy.
 - D. My happiness lies in the happiness of others.

(3)



Weekly Market



Super Market

Observe the pictures. The two shopping centres give us different experiences.

- a) Prepare a note comparing weekly markets and super markets.
- b) Which among the following features does not belong to Peeli's features?
 - A. Vast Agricultural fields
 - B. Dishes using indigenous food items.
 - C. Busy streets
 - D. Simple life

(4.A) Observe the pictures



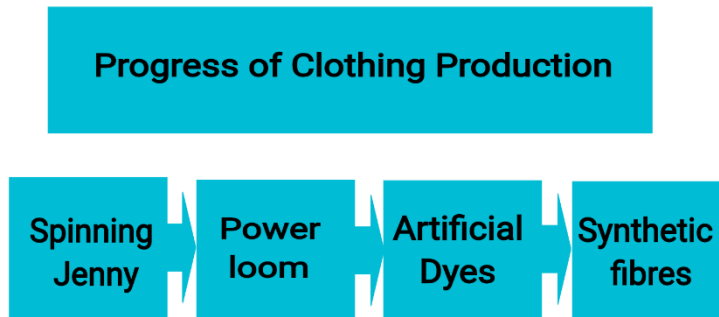
- a) Find out the changes in clothing style over the times. Write the reasons.

b) Which among the following is not a handloom centre in Kerala?

- A. Balaramapuram
- B. Kuthampulli
- C. Aranmula
- D. Kannur

OR

(4.B)



Observe the illustration.

a. Write the statements that describe the changes in clothing production brought about by the use of machines.

- There was an increase in clothing production
- The burden of human labour increased
- It became a reason for clothing diversity
- It became possible to produce high quality clothes

b. Write a short note explaining Synthetic fibers used in clothing production.

(5)

A young man gave jobs to many families through self - employment

A home maker earns Rs. 50,000 per month through self employment

Read the news headlines

a) Prepare 4 questions to interview an entrepreneur who has achieved success on life through self employment.

- b) The Government implements various schemes to promote success through self-employment initiatives. Complete the table of self employment schemes and beneficiaries.

Self – employment scheme	Beneficiaries
<ul style="list-style-type: none"> ● Navajeevan Project ● ● Saranya 	<ul style="list-style-type: none"> ● ● People with disabilities ●

(6)

Observe the table of different jobs prepared by students, on the topic “Diversity of jobs”.

Diversity of Jobs
<ul style="list-style-type: none"> ● Agriculture ● Trade ● Teaching ● Cattle rearing ● Fishing ● Law enforcement ● Apiculture ● Rubber tapping

- a) Arrange the jobs suitably in the given table.

Agricultural occupations	Non-agricultural occupations

- b) Which among the following is not a source of income?

- A. Cultivation
- B. Voluntary Service
- C. Assets
- D. Trade