

# MODEL EXAMINATION 2011-2012

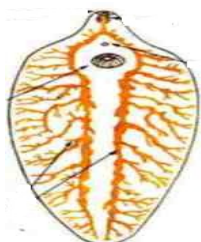
PART III

HSE 1

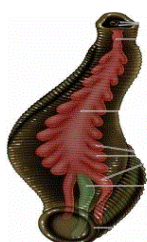
ZOOLOGY

MAX. MARK: 30

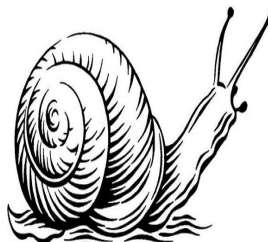
- The common name House fly is simpler than its scientific name *Musca domestica*. Mention the importance of scientific name. ? (1 Score)
- Observe the diagrams A, B, C, D and E given below.



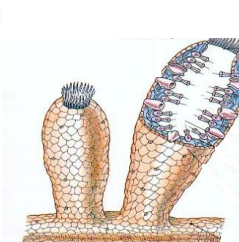
A



B

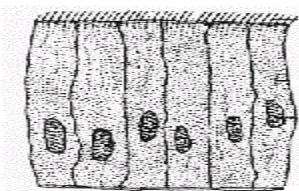


C



D

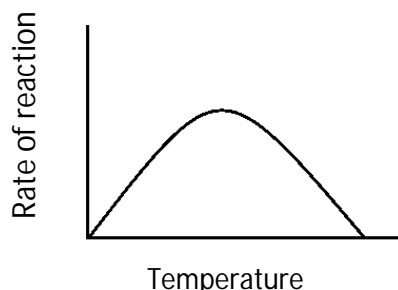
- Identify their phylum
  - Mention any one characteristic features of each of them (4 Score)
- Construct a flow chart showing the path of food through the alimentary canal of cockroach (2 Score)
  - Villi increases the absorptive area in man. Can you suggest the part which carry out the same function in earthworm (1 Score)
  - Identify the following tissues
    - Write their location (2 Score)



- Observe the given table and fill up the blanks with suitable words (2 Score)

COLUMN A	COLUMN B
Oxidoreductases	
	Removal of group from substrate
Isomerase	
	Catalyses linking together of two components

- Comment on the given graph (1 Score)



- $I^{2+}$  C ... Pm....  $M^{3+}$  fill up the blanks (1 Score)
- Major digestive enzymes are enlisted below. Arrange them in suitable groups based on functions.
 

Dipeptidase, ptyalin, pepsin, nucleotidase, pancreatic lipase, trypsin. (3 Score)
- $Ca^{2+}$  ions are necessary for muscle contraction

a) Justify the statement

b) Identify the source of energy for muscle contraction

(2 Score)

11. Observe the given table and fill up the blanks with suitable words

(3 Score)

.....	.....
Right ventricle	Left ventricle
.....	.....
Lungs	Body parts
.....	.....
Left atrium	Right atrium

12. Name the nitrogenous wastes in these animals

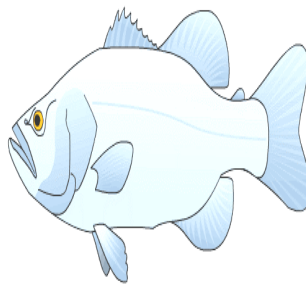
(2 Score)



A



B

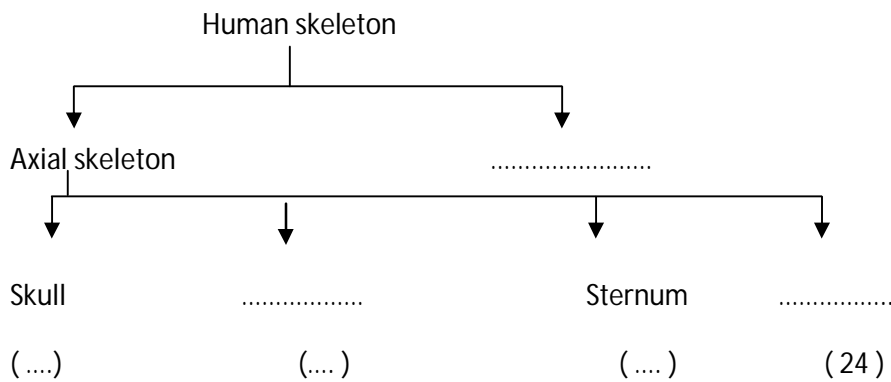


C



D

13. Fill up the blanks with suitable words



( 3 Score)

14. Copy the diagram and label ABCD

(3 Score)

