

Unit summary note

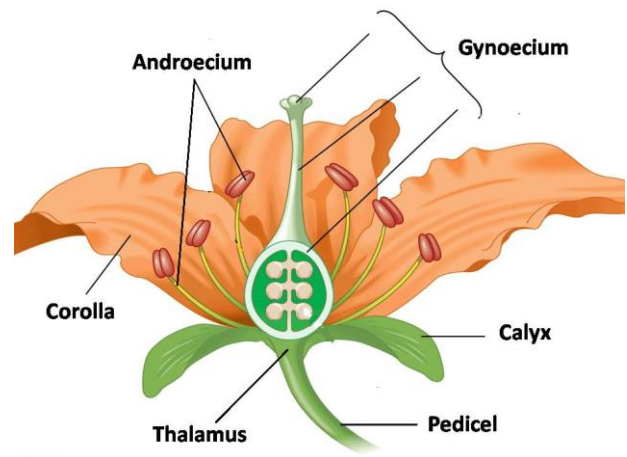
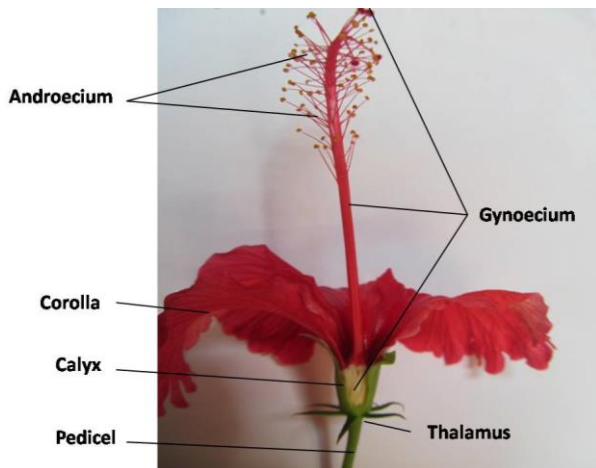
Std 6, Unit-3, Flower to flower (Part-1)

Prepared by ILLIAS PERIMBALAM, GBHSS Manjeri, Mob : 9745200510

In what respects, are the flowers different?

- Number of petals
- Colour
- Size, weight
- Shape
- fragrance
- Single flower/ inflorescence
- Day blooming/ night blooming
- life time

Parts of flowers



To see two videos on this topic, click on the following links

<https://www.youtube.com/watch?v=Vj8sogYfsDo&list=PL9AshZEiXvDliKbw3pxDbolYQCAfmEHp3&index=10>

<https://www.youtube.com/watch?v=HVUzpdsmavI&list=PL9AshZEiXvDliKbw3pxDbolYQCAfmEHp3&index=9>

പാഠഭാഗങ്ങളുടെ കൂടുതൽ വി.ഡി.എഫ്. ഫയലുകളും വീഡിയോകളും ലഭിക്കാൻ TECH Malappuram ശാസ്ത്രാധ്യാപക കൂട്ടായ്മ വികസിപ്പിച്ച ശാസ്ത്രച്ചെപ്പ് ആപ്ലിക്കേഷനിൽ നിന്നും ഡൗൺലോഡ് ചെയ്ത് ഇൻസ്റ്റാൾ ചെയ്യുക.
<https://play.google.com/store/apps/details?id=com.basith.sastracheppuapp>.

Parts of flowers and their functions

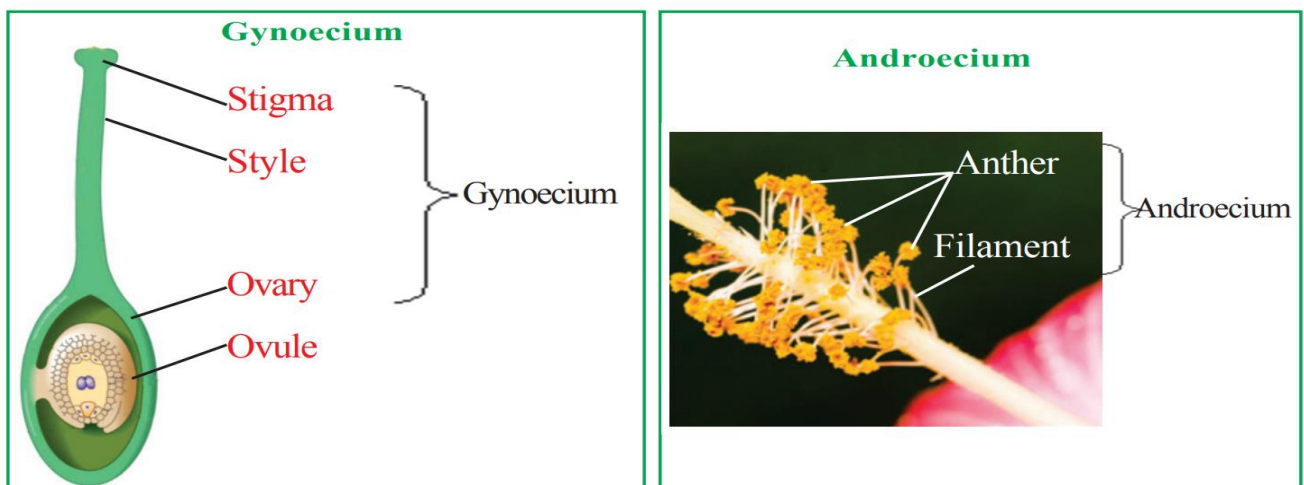
Name of part	Function
Pedice	Connects the plant with the flower
Thalamus	Holds different parts of the flower
Calyx (Sepals together)	Protects the flower when it is a bud. Holds petals after it blooms
Corolla (Petals together)	Provides colour, fragrance and attractiveness to the flower
Androecium	Male reproductive part of the flower (Formed of anther and filament)
Gynoecium	Female reproductive part of the flower (Formed of stigma, style and ovary)

Reproduction in plants

Reproduction is the process by which organisms produce their young ones to retain their ancestry. Flowers perform the function of reproduction in plants. Flowers are the reproductive organs in plants.

Sex organs in flowers

Androecium and gynoecium are the sex organs in flowers. Gynoecium has three parts named ovary, style and stigma. Inside the ovary, ovules are found. Egg is found inside ovule. Androecium is a group of stamens. Anther and filament are the parts of stamen. Pollen grains are seen in anthers. Male gametes are seen inside the pollen grains.

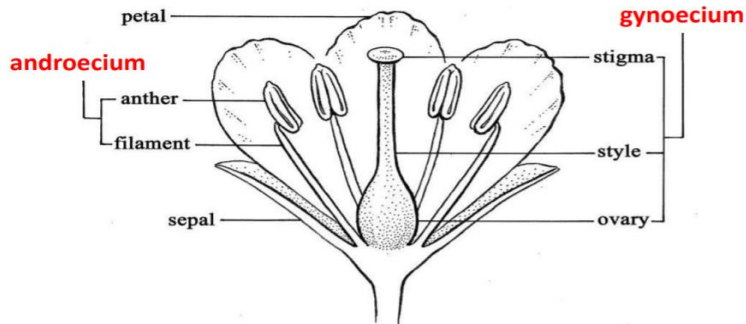


To see a video on this topic, click on the following link

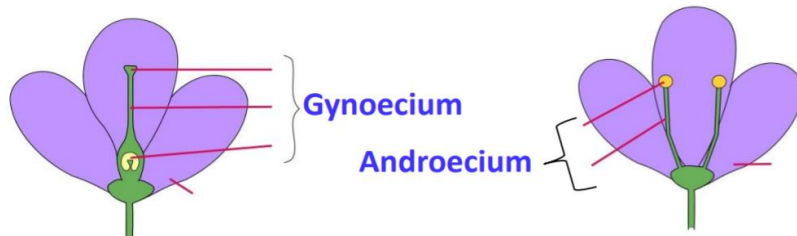
<https://www.youtube.com/watch?v=jUs4IfbESQI&list=PL9AshZEiXvDliKbw3pxDboIYQCAfmEHp3&index=29>

പാഠഭാഗങ്ങളുടെ കൂടുതൽ പി.ഡി.എഫ്. ഫയലുകളും വീഡിയോകളും ലഭിക്കാൻ TECH Malappuram ശാസ്ത്രാധ്യാപക കൂട്ടായ്മ വികസിപ്പിച്ച ശാസ്ത്രച്ചെപ്പ് ആപ്ലിക്കേഷനിൽ നിന്നും ഡൗൺലോഡ് ചെയ്ത് ഇൻസ്റ്റാൾ ചെയ്യുക.
<https://play.google.com/store/apps/details?id=com.basith.sasthracheppuapp>

Unisexual and bisexual flowers



Flowers which have both androecium and gynoecium are called bisexual flowers. Eg:- Hibiscus (ചെമ്പരത്തി), Oleander (അരളി), Clitoria (ശംഖുപുഷ്പം), Ladies finger (വെണ്ട)



In some flowers, either androecium or gynoecium is present. Such flowers are called unisexual flowers. Eg:-Pumpkin, papaya, coconut, arecanut, snake gourd

To see a video on this topic, click on the following link

<https://www.youtube.com/watch?v=JNRIgPWLY1s&list=PL9AshZEiXvDliKbw3pxDbolYQCAfmEHp3&index=28>

Flowers having both androecium and gynoecium (Bisexual flowers)	Flowers having either androecium or gynoecium (Unisexual flowers)
Hibiscus Oleander Clitoria Ladies finger	Pumpkin Papaya Coconut Arecanut snake gourd

Male and female flowers



Papaya female flower

Papaya male flower

Flowers that have only androecium are male flowers and those with only gynoecium are female flowers. Papaya, pumpkin, cucumber, bitter gourd, snake gourd, ash gourd, coconut and arecanut trees have both male and female flowers.

പാഠഭാഗങ്ങളുടെ കൂടുതൽ വി.ഡി.എഫ്. ഫയലുകളും വീഡിയോകളും ലഭിക്കാൻ TECH Malappuram ശാസ്ത്രാധ്യാപക കൂട്ടായ്മ വികസിപ്പിച്ച ശാസ്ത്രച്ചെപ്പ് ആപ്ലിക്കേഷനിൽ നിന്നും ഡൗൺലോഡ് ചെയ്ത് ഇൻസ്റ്റാൾ ചെയ്യുക.

<https://play.google.com/store/apps/details?id=com.basith.sastracheppuapp>.



Male and female plant

Some plants bear male flowers only. They are called male plants. Some plants bear female flowers only. They are called female flowers. There are male and female plants among fan palm (കുടപ്പന), gambooge (കുടംപുളി), nutmeg (ജാതി) etc.