

Second Mid Term Evaluation

KP(G)
Std. 10

Biology

Time : 45 Mnts
Score : 20

Instructions:

- The first 7 minutes and cool - off time
- This time is to be spent for reading the questions paper
- You are not supposed to write anything during the cool - off time
- Read the instructions carefully and attempt the questions

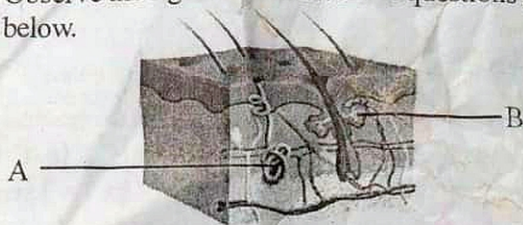
Answer any three questions from 1 to 4. Each question carries 1 score. (3 x 1 = 3 score)

1. Find the odd one. Write the common feature of others.
Diphtheria, Dengue fever, AIDS, Chikungunya
2. Identify the word pair relationship and fill the missing word. Mention the relation among the pairs.
Electro Cardio Gram : to record electric waves in the heart muscle. :: C.T. Scanner :
3. Select the correct answer.
Imparts dark yellow colour to the mucus membrane, white portion of the eyes and the nails. Name the disease that has these symptoms.
(A) AIDS (B) Hepatitis
(C) Nipah (D) Leptospirosis
4. Select the correct pairs.
(a) Blight disease in paddy - Virus
(b) Bud rot of coconut. - Fungus
(c) Bunchy top of banana - Virus
(d) Mosaic disease in tapioca - Bacteria

(P.T.O.)

Answer any four questions from 5 to 9. Each question carries 2 score. (4 x 2 = 8 score)

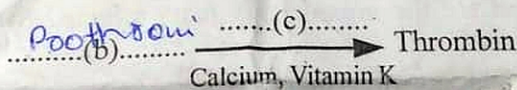
5. Observe the figure and answer the questions given below.



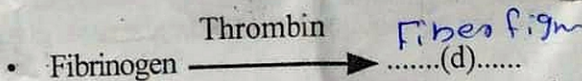
- (a) Identify the parts indicated as A,B.
 (b) What is the role of the parts indicated as A,B in defense mechanism?
6. Arrange column B and C in accordance with the data given in column A.

A	B	C
(i) Malaria	(a) Fungus	(1) Severe fever, headache, muscle pain, redness in eyes
(ii) Athletes foot	(b) Virus	(2) High fever with shivering and profuse sweating.
	(c) Plasmodium	(3) Appearance of reddish scaly rashes that cause itching.

7. Cancer is caused by the uncontrolled division of cells and their spread to other tissues.
- (a) What are the causes that changes normal cells get transformed into cancerous cells?
- (b) Early diagnosis of the disease is crucial in the treatment of cancer. Why?
8. The stages related to blood clotting are given below. Fill the missing part.
- Tissues and platelets at the site of wound degenerate to form the enzyme called(a).....



Thrombin



9. Observe the illustration related to a genetic disease and answer the questions given below.



- (a) Identify the disease. *sickle cell anemia*
- (b) How does the deformity of red blood cells in these patients affect their body?

Answer all questions from 10 to 12. Each question carries 3 score. (3 x 3 = 9 score)

10. Vaccines are the substances used for artificial immunization.

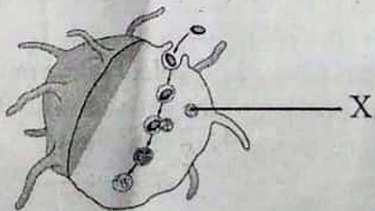
- (a) What is immunization?
(b) What are the components of vaccine?
(c) How immunization is made possible by vaccines?

11. The symptoms of a disease is given below.

Loss of body weight, fatigue, persistent cough.

- (a) Identify the disease. Name the pathogen.
(b) What are the organs/body parts affected by this disease?
(c) How this disease is transmitted?

12. Observe the illustration and answer the questions given below.



- (a) Identify the defense activity.
(b) Name the white blood cells which participate in this defense activity.
(c) Identify the cell organelle indicated as X. How this cell organelle helps in the above defense activity?