

## Ch 6. Map Reading - Online Class 16 (14.10.20)

### 1. Online maps

OpenStreetmap, Wikimapia and Google maps

### 2. Web address of Online maps

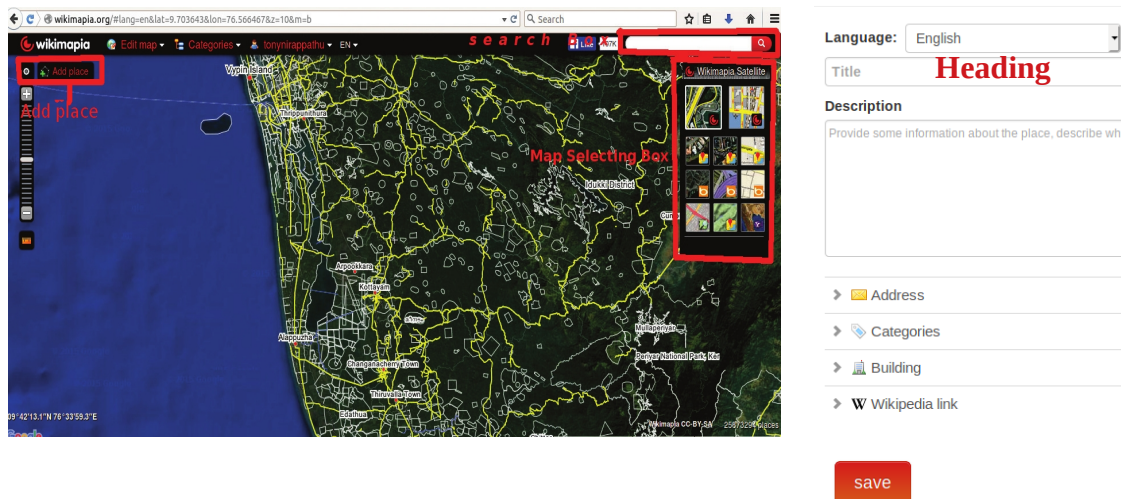
Wikimapia - [www.wikimapia.org](http://www.wikimapia.org)

OpenStreetmap - [www.openstreetmap.org](http://www.openstreetmap.org)

Google maps - [www.map.google.com](http://www.map.google.com)

### 3. How to mark your house in Wikimapia

- ◆ Open Wikimapia.
- ◆ Click on satellite view from the wikimapia map at the top right
- ◆ Enlarge the map as far as possible to locate your house clearly.
- ◆ When you have located your house, right click on it and find the latitude and longitude..
- ◆ click on the Add place button.
- ◆ Draw the boundary of the house by clicking the mouse.
- ◆ A window will appear when you click on the Save button. Enter the data and save.



### 4. Collaborative maps

Maps prepared on the basis of the informations obtained from users

Eg : OpenStreet Map, Wikimapia and Google maps

### 5. **Geographical Information System (GIS)**

The surface features of the earth and locational information are collected in a server in the form of maps and data. GIS is a technique developed to make necessary changes to this database, analyse them, classify them and so on.

### 6. **GIS softwares**

Geographical Information System is a software that can record land surface information and positional information in different layers

Important GIS softwares- Quantum GIS, GRASS, Arc GIS

Free softwares - Quantum GIS, GRASS

### 7. **Positional information**

Positional informations are the surface features of a fixed latitude and longitude

### 8. **Quantum GIS software**

A free software came out in 2009

Its aims

- To make maps
- To display maps, modify maps, create new ones
- To analyse the data available in the geographic domain
- To display the analysis results in the form of tables or maps as required

### 9. **How to open QGIS**

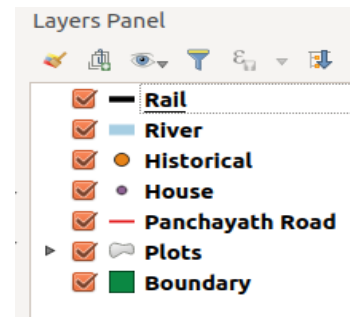
Application → Education → QGIS Desktop

### 10. **How to make the comprehensive map of a panchayath**

- ◆ First add an outline map of the Panchayath to the application
- ◆ It should be subjected to geo-referencing (To correct Latitude and longitude information)
- ◆ Each fact is included as layers in the form of object

## 11. How to include the map

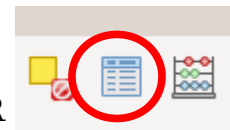
- Open QGIS
- Project → Open → Qgis projects → Panchayath projects → Open → Panchayat.qgs
- You can observe the changes by clicking on the check box next to each layer in the left layer panel in the included panchayath map.



## 12. How to see the attributes of a layer

Select the layer.

Rt click → open attribute table OR



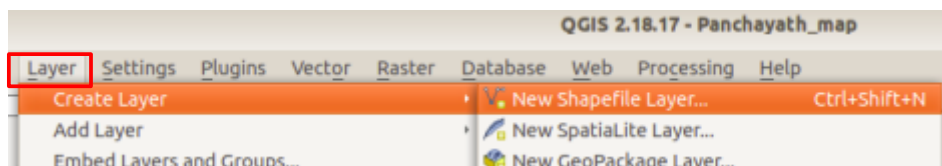
## 13. Attributes

Data of a Positional information

Eg : River - a positional information, Its attributes- Drying, non drying

## 14. To include new layer

- ▶ From the menu open layer → create layer → new shape file layer



- ▶ In the window that opens, select Layer Type

Different layer types

House, Well - Point

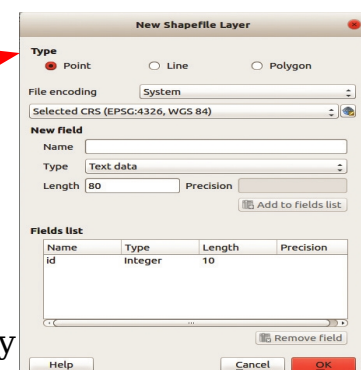
River, Road - Line

Pond, Lakes - Polygon

- ▶ In the place New field, add the attributes one by one. Eg: owner, depth, expense, etc

- ▶ Define the type of each attribute (text, number, etc.)

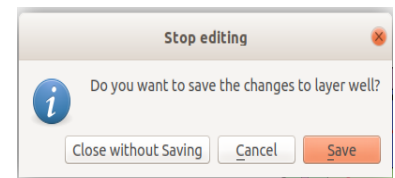
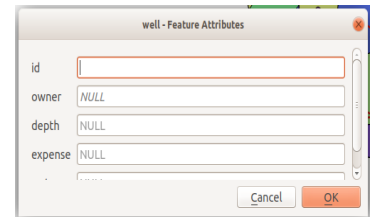
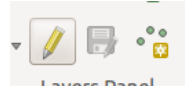
- ▶ Further add each Field by clicking the button Add to fields list.



- ▶ Click OK, give suitable name in the Name of the opened window and then Save

## 15. To include the details (House, well, etc) to the newly created layer

- ◆ Select the new layer that appears in the layer box
- ◆ Click the Toggle editing
- ◆ Press Add feature, then click at the location where the details are to be marked
- ◆ Include the attributes (Eg: owner, depth, expense , etc) in the opened table and click OK
- ◆ Click Toggle Editing button once again to disable editing. Click Save on the Stop Editing windows that appears.



## 16. To modify the layer

- ◆ Right click on the layer then click Properties
- ◆ Click Style of Properties window and make necessary changes



Touch or click here to watch this class



Scan the QR code