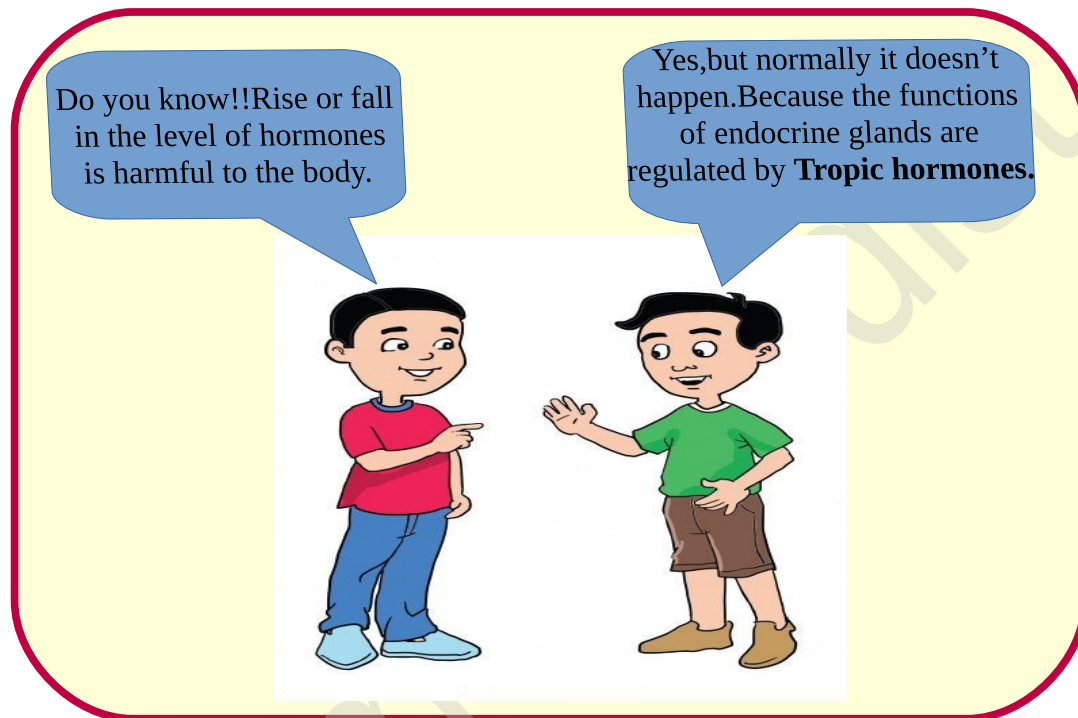


THIRUVANANTHAPURAM EDUCATIONAL DISTRICT

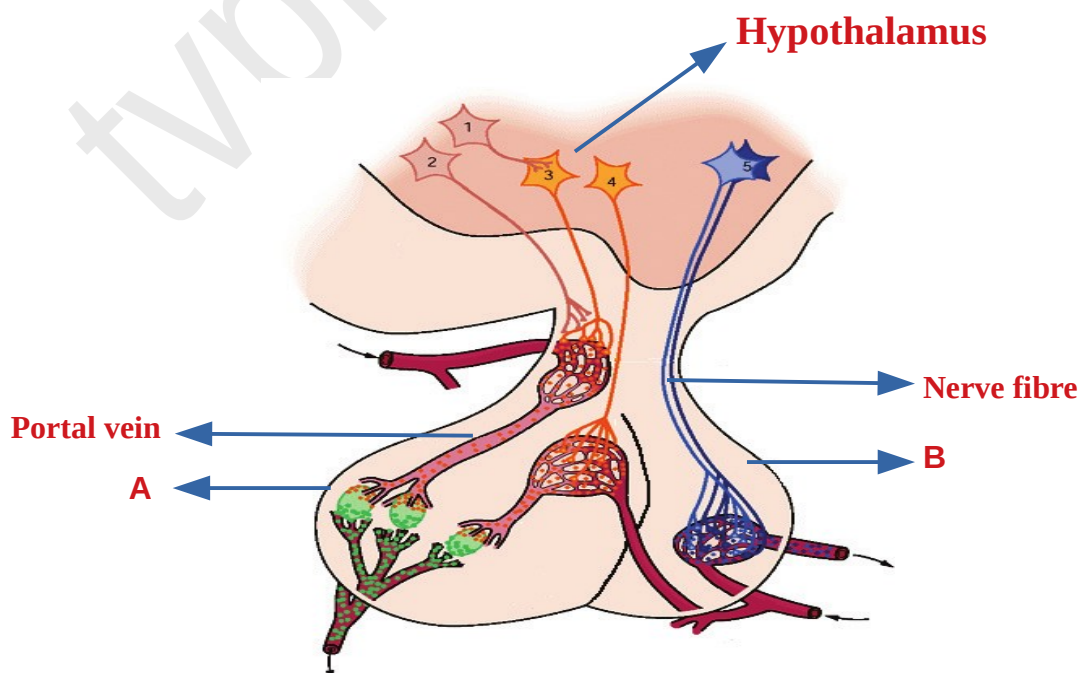
BWS7 X

STANDARD X BIOLOGY

1. Listen to the conversation.



Analyse the illustration and answer the following questions.



a) Identify A and B

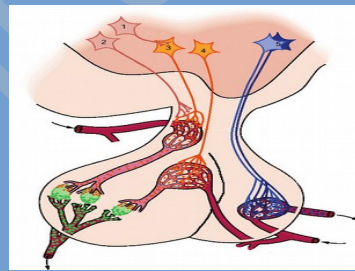
b) Which gland produces the tropic hormones that regulate the functions of other endocrine glands?

c) Name the tropic hormones.

d) Mention the other hormones secreted from A.

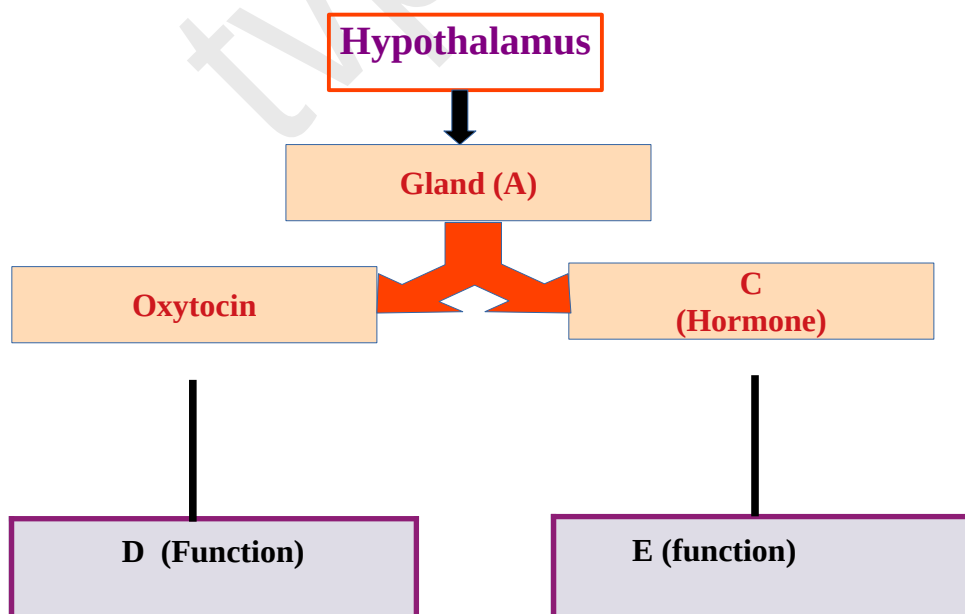
2. Analyse the statement in Neenu's science diary and answer the questions.

Two hormones produced by the neurosecretory cells of the hypothalamus are stored and released from another gland when required.



a) Do you agree with the statement ?

b) Complete the illustration to justify your answer.

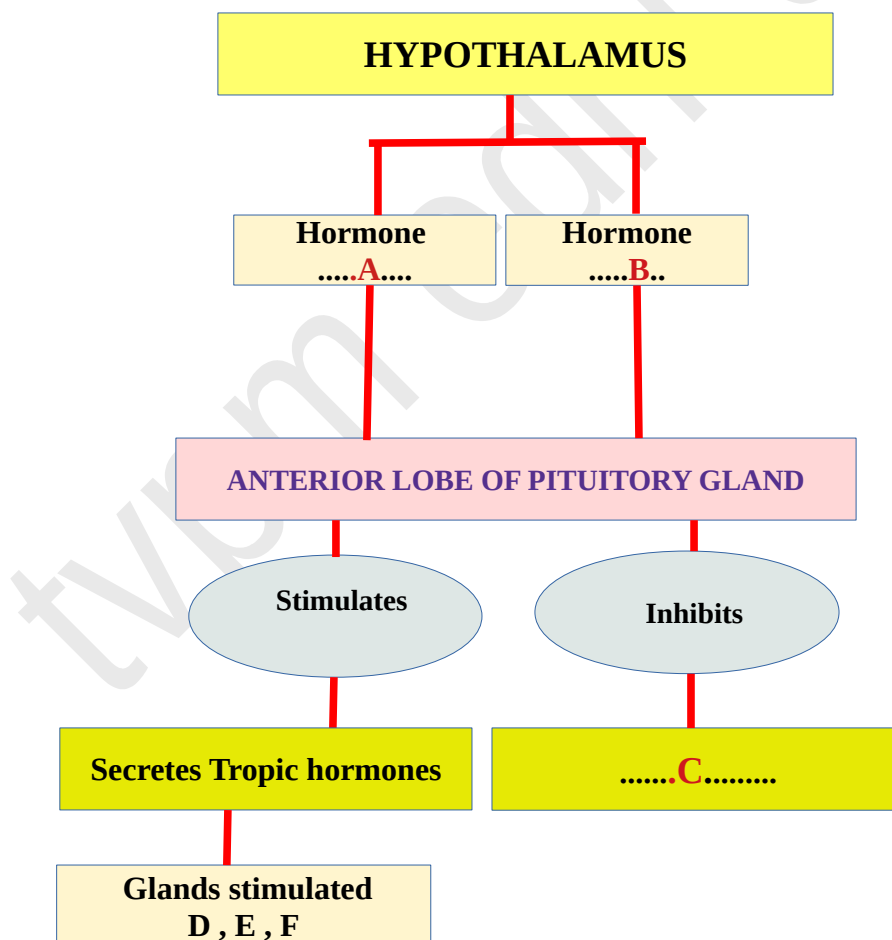


3. Read the statement.

Hypothalamus -The prime controller

The hypothalamus, a part of the brain controls the pituitary gland and thereby the entire endocrine system by producing a variety of hormones.

Complete the following illustration and justify the above statement.



4. Observe the physical features of the persons given in the photographs and complete the table.



Condition	Symptom	Reason
A.....	Excessive growth of the bodyB.....
Dwarfism	Stunted growthC.....
D.....E.....	Excessive production of somatotropin after the growth phase.

5. Read the conversation among three friends and answer the following questions.

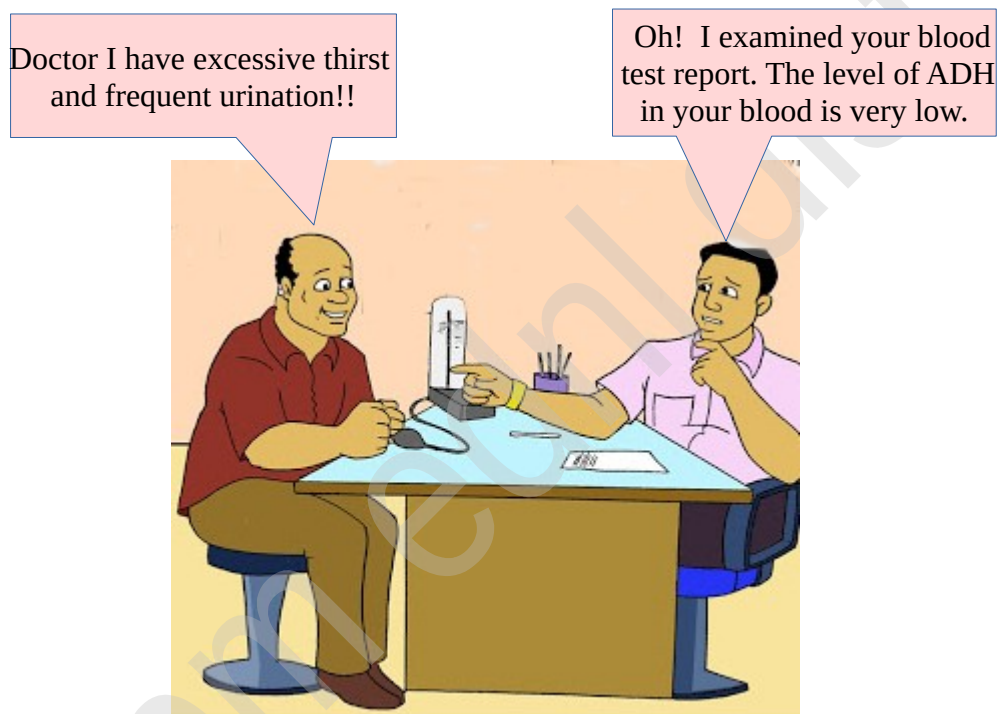


- a) Which is the hormone mentioned here?
- b) How does this hormone regulate the level of water in our body?
- c) Complete the table to know how this hormone regulates the quantity of urine in summer and winter.

Indicators	Winter season/ Rainy season	Summer season
Hormone production	A	C
Reabsorption of water in kidneys	B	increases
Quantity of urine	Raises the quantity of urine	D

6.

Read the conversation between the doctor and patient given here and answer the following questions .



- i) What is ADH ?What is the other name of this hormone ?
 - ii) Which is the condition mentioned here?
 - Iii) Which body activity has been affected when this hormone production decreases in our body ?
-