

SAMAGRA SHIKSHA, KERALA
Second Terminal Evaluation 2018-19

E 906-Bio

BIOLOGY

Std. : IX

Time : 1½ Hours
Score : 40

Instructions :

1. First 15 minutes is given as cool off time. This time is to be used for reading and understanding the questions.
2. Answer the questions based on instructions.
3. Answer the questions according to the score and time.

I. Answer any 5 from questions 1 to 6. Each question carries 1 score (5 x 1=5)

1. Choose the correct statement.
 - a) Chlorophyll a, Chlorophyll b, Carotene and Xanthophyll directly take part in photosynthesis.
 - b) Chlorophyll a, Chlorophyll b and Carotene directly take part in photosynthesis.
 - c) Chlorophyll a and Chlorophyll b directly take part in photosynthesis.
 - d) Chlorophyll a directly takes part in photosynthesis.
2. Pick the odd one and write the common features of others
a) Saliva b) Gastric juice c) Bile d) Pancreatic juice
3. The ability of water molecules to stick to the walls of xylem vessels.
a) Root pressure b) Adhesion c) Cohesion d) Transpiration
4. Correct the mistakes if any, in the underlined part of the statements.
 - a) Tidal volume is the volume of air that can be breathed out by a forceful expiration after maximum inspiration.
 - b) Tidal volume is about 500ml.
5. Choose the correct answer by finding out the parts of phloem among the following.
i) Tracheid ii) Sieve tube iii) Vessel iv) Companion cell

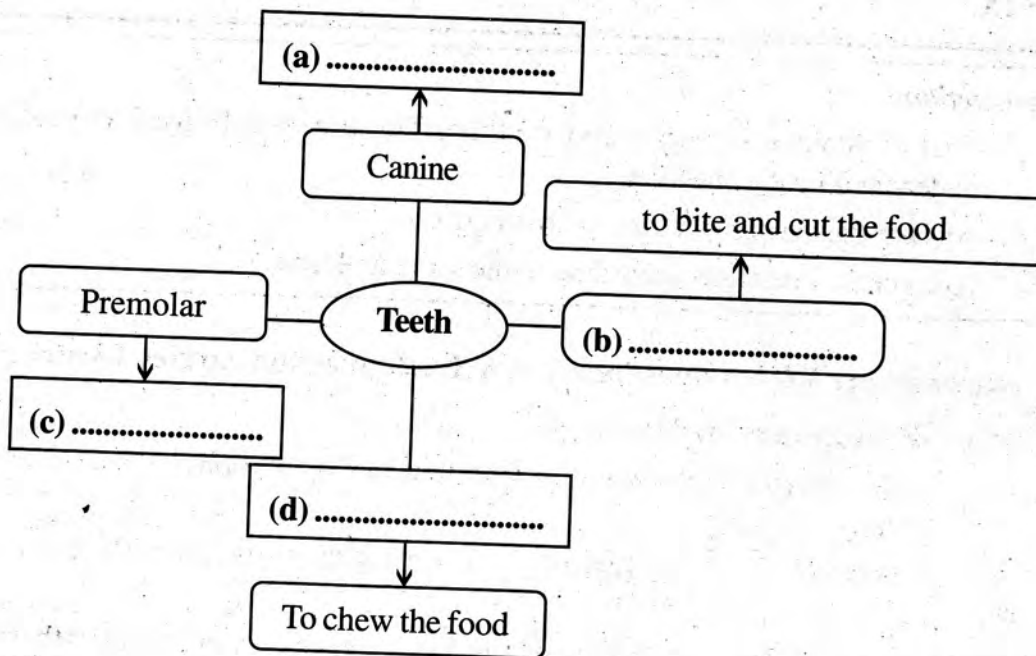
Answers:

- a) i, ii b) ii, iii c) ii, iv d) i, iv
6. Which among the following is the action of Trypsin
 - a) Converts protein into peptones partially
 - b) Converts protein into fatty acid
 - c) Converts protein into peptides
 - d) Converts protein into aminoacid

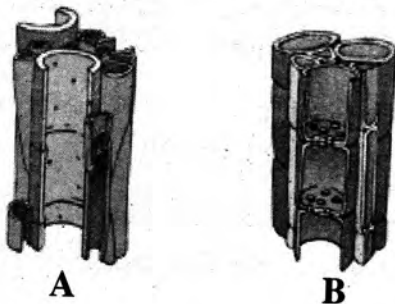
II. Answer any 6 from questions 7 to 13. Each question carries 2 score (6 x 2=12)

7. The destruction of producers of ocean also adversely affect the terrestrial organisms. How?

8. Complete the illustration suitably.

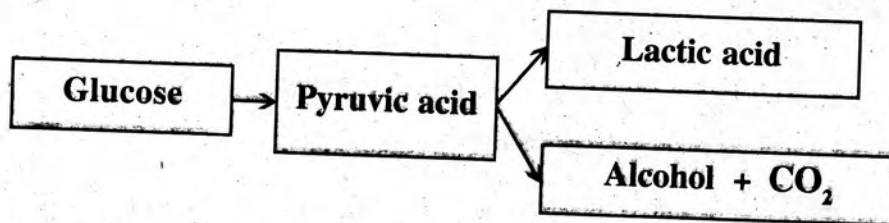


9. Observe the figures and write answers to the questions



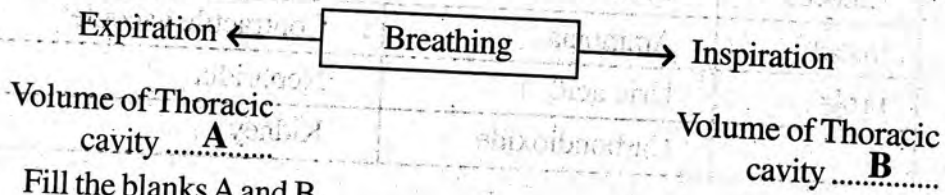
- Identify A and B
- Mention the function of A

10. Analyse the process and answer the questions.



- What is the common term for the process?
- Give one example of this process from daily life.

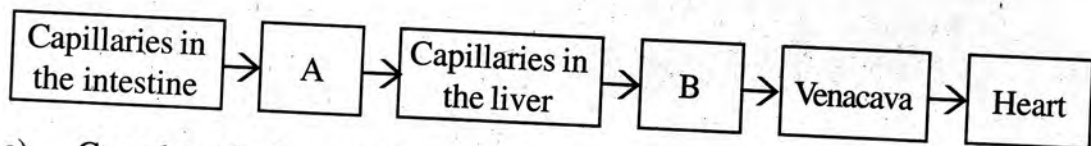
11. "Leaves absorb Oxygen from the atmosphere. From there oxygen is conducted to the roots." Evaluate the statements and write your opinion.
12. Observe the illustration and answer the questions.



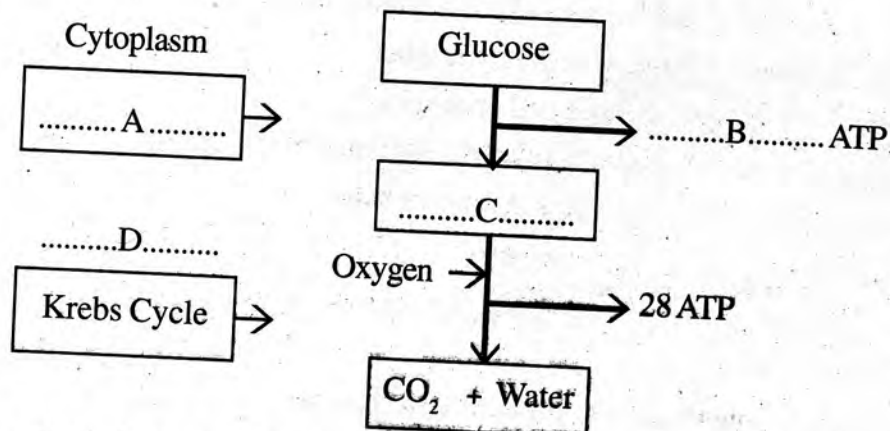
- a) Fill the blanks A and B.
 - b) Identify the muscle that helps the movement of ribs in this activity.
13. A person is suffering from non functioning of both kidneys.
 - a) Name this disease
 - b) What is its permanent remedy?

III. Answer any 5 from questions 14 to 20. Each question carries 3 score (5 x 3=15)

14. A person's Blood pressure is denoted as 120/80mmHg. Analyse this data and draw inference.
15. Analyse the flow chart and answer the questions.



- a) Complete the flow chart.
 - b) Which blood circulation is shown in this illustration?
 - c) What is the role of liver in this circulation?
16. Identify and write the phase of respiration shown in the illustration. Fill in the blanks suitably.



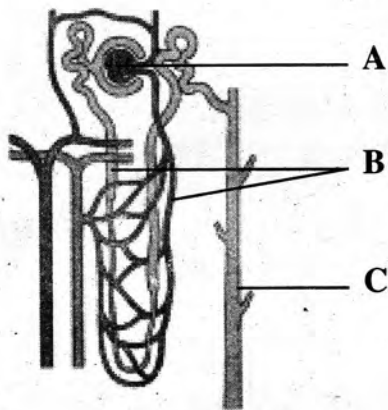
17. A doctor advised that drinking 2 – 3 litres of water per day and proper urination will reduce urinary diseases. How is it possible?

18. Rearrange the table appropriately.

Organism	Excretory product	Excretory organ
Amoeba	Urea	Malpighian tubules
Insect	Ammonia	Contractile vacuole
Frog	Uric acid	Nephridia
	Carbondioxide	Kidney

19. What are the forms by which Carbon dioxide is transported through the blood ?

20. Observe the diagram and answer the questions.



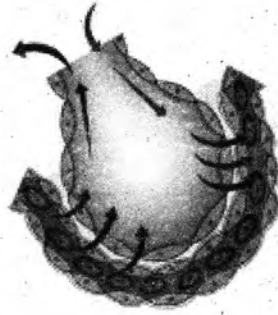
- Identify A & C.
- Mention the process taking place in B.
- Name the products formed due to the processes in A and C.

IV. Answer any 2 from questions 21 to 23. Each question carries 4 score. (2x4 = 8)

21. Analyse the hints given below and answer the questions.

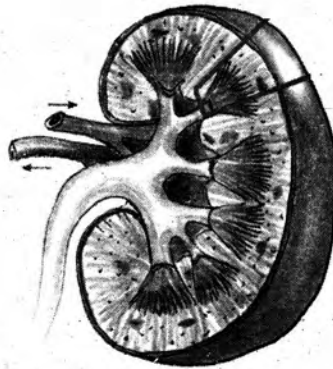
- Blood cell that is more in number.
 - Blood cell without cell organelle.
 - Plasma component related to defence mechanism.
 - Blood cell that helps defence mechanism.
- Choose the hints related to RBC.
 - Write the name of blood cell excluded from the hints mentioned above and write its function.
 - Substantiate that the features of RBC are very much suited to its function.

22. Observe the figure and answer the questions .



- Which part is indicated above. Structure of this part is very suited to gas exchange? Explain.
- Mention the mechanism to destroy the pathogens that enter to this part.
- How do the tar and carbon monoxide that enter the body through smoking affect this part?

23. Redraw the diagram showing longitudinal section of the kidney. Name and label the parts mentioned below.



- Inner darker region.
- The blood vessel that brings blood to kidney.
- Tube which carries urine to urinary bladder.
